



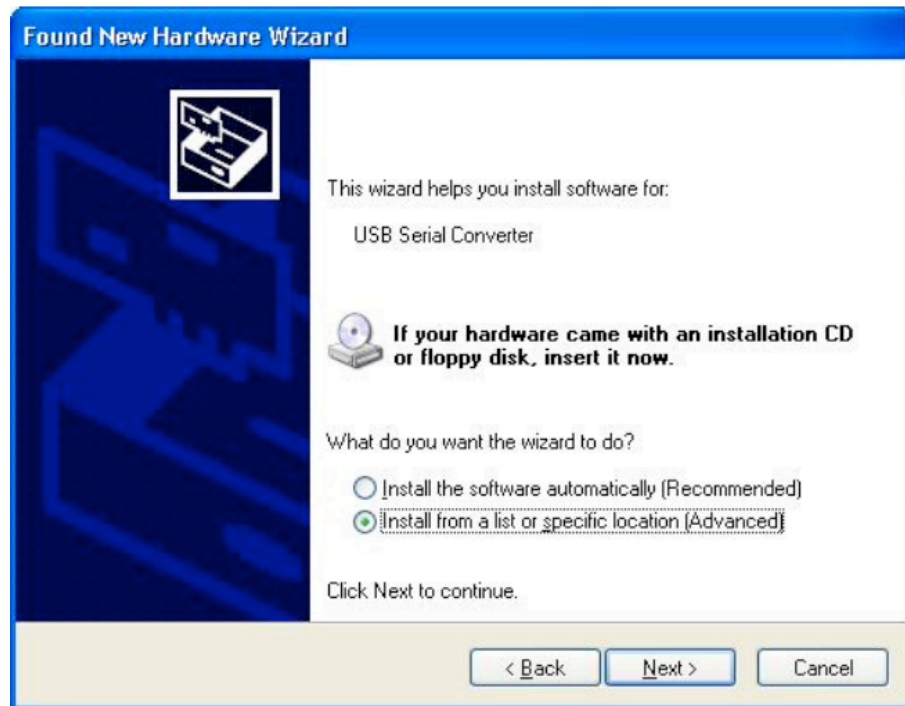
Windows XP Driver Installation Guide

To install the device drivers for the Minitor Programmer under Windows XP, follow the instructions below:

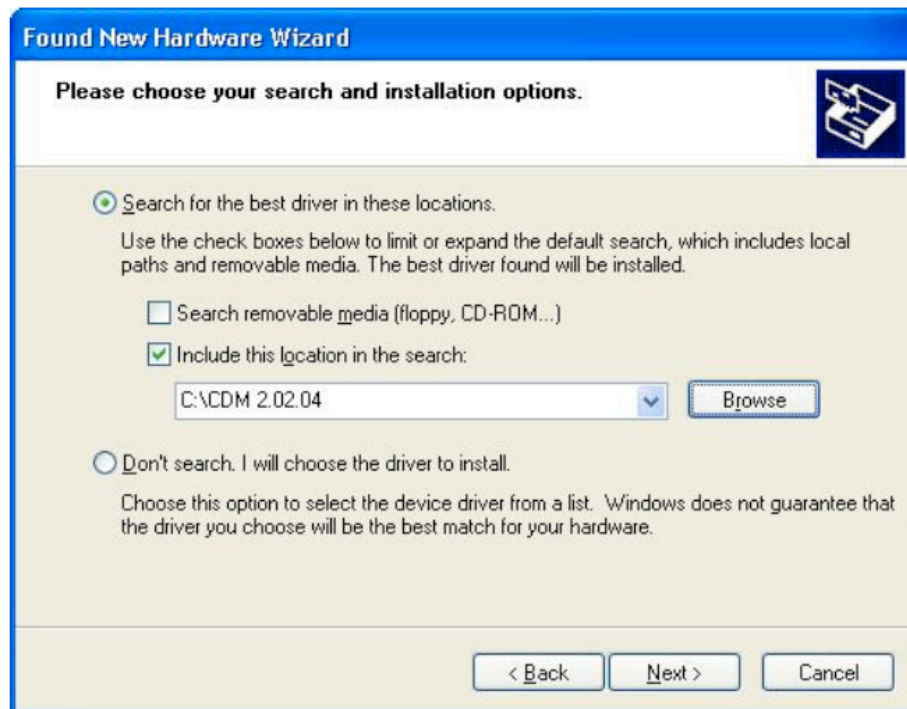
- If you are running Windows XP or Windows XP SP 1, temporarily disconnect your PC from the Internet. This can be done by either removing the network cable from your PC or by disabling your network card by going to the "Control Panel\Network and Dial-Up Connections", right-clicking on the appropriate connection and selecting "Disable" from the menu. The connection can be re-enabled after the installation is complete. This is not necessary under Windows XP SP 2 if configured to ask before connecting to Windows Update. Windows XP SP 2 can have the settings for Windows Update changed through "Control Panel\System" then select the "Hardware" tab and click "Windows Update".
- Connect the device to a spare USB port on your PC. The Windows Found New Hardware Wizard will launch. If there is no available Internet connection or Windows XP SP 2 is configured to ask before connecting to Windows Update, the screen shown in the next figure is displayed. Select "No, not this time" from the options available and then click "Next" to proceed with the installation. If there is an available Internet connection, Windows XP will silently connect to the Windows Update website and install any suitable driver it finds for the device in preference to the driver manually selected.



- Select "Install from a list or specific location (Advanced)" as shown below and then click "Next".



- Select "Search for the best driver in these locations" and browse to it by clicking the browse button. Once the file path has been entered in the box, click next to proceed.



- The screen shown below will be displayed as Windows XP copies the required driver files.



- Windows should then display a message indicating that the installation was successful. Click "Finish" to complete the installation for the first port of the device.



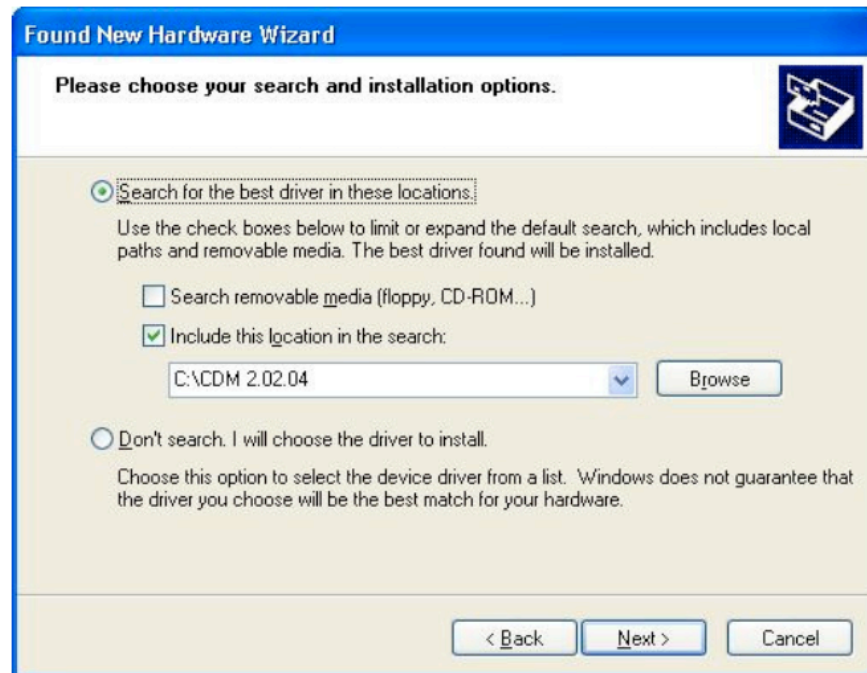
- The Found New Hardware Wizard will launch automatically to install the COM port emulation drivers. As above, select "No, not this time" From the options and click "Next" to proceed with the installation.



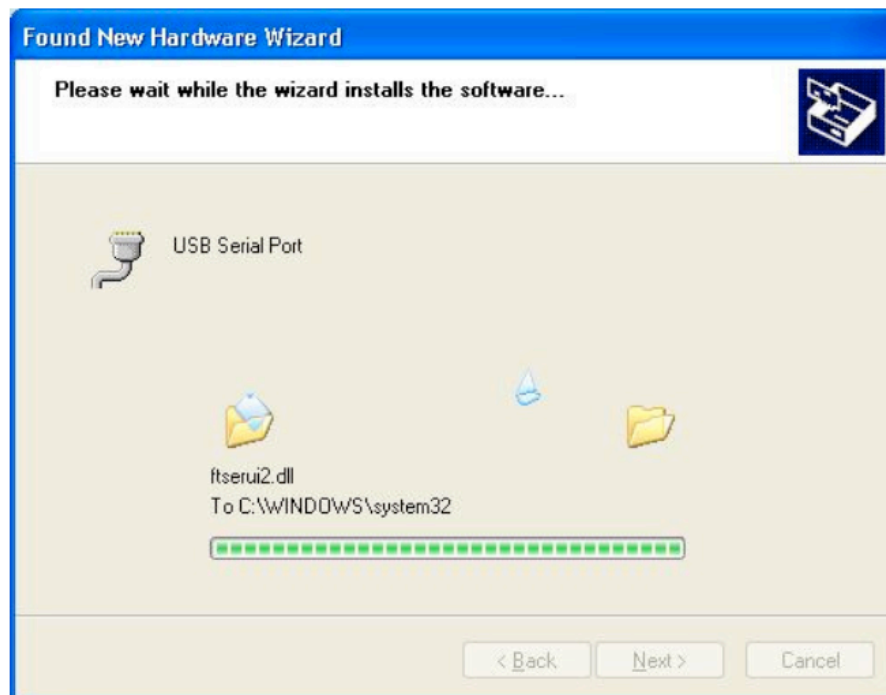
- Select "Install from a list or specific location (Advanced)" as shown below and then click "Next".



- Select "Search for the best driver in these locations" and browse to it by clicking the browse button. Once the file path has been entered in the box, click next to proceed.



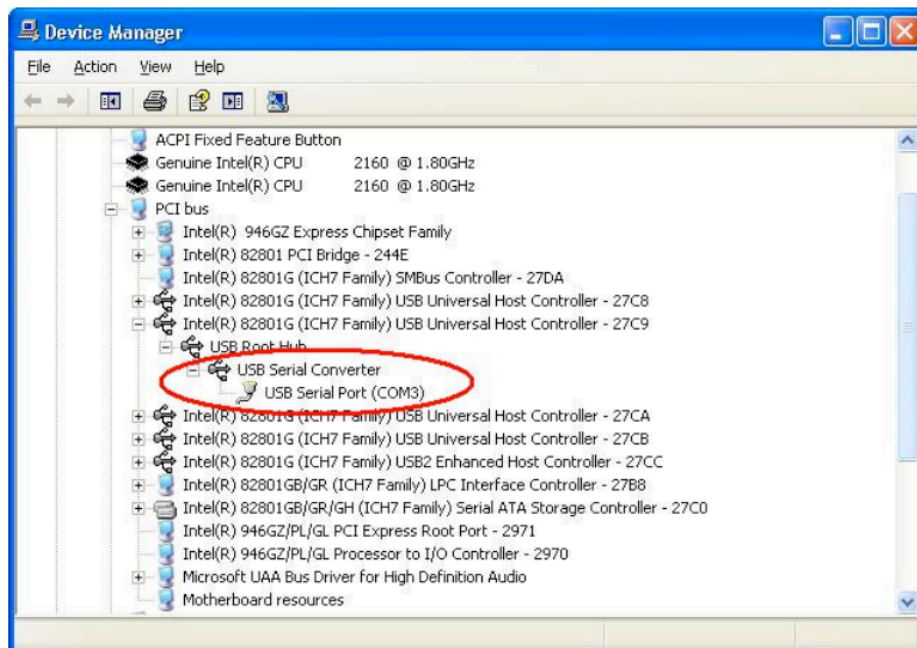
- The screen shown below will be displayed as Windows XP copies the required driver files.



- Windows should then display a message indicating that the installation was successful. Click "Finish" to complete the installation for the first port of the device.



- Open the Device Manager (located in "Control Panel\System") then select the "Hardware" tab and click "Device Manager") and select "View > Devices by Connection", the device appears as a "USB Serial Converter" with an additional COM port with the label "USB Serial Port" (below figure).



- Set the COM port in the Minitor Software to the COM port shown in the Device manager on your computer.